



IMS

IMS

Working Holiday Program

ADDRESS : PASEO SATURNINO STREET, MARIA LUISA ROAD, BANILAD CEBU CITY, PHILIPPINES

 www.ims7.com

 [IMS Academy](#)

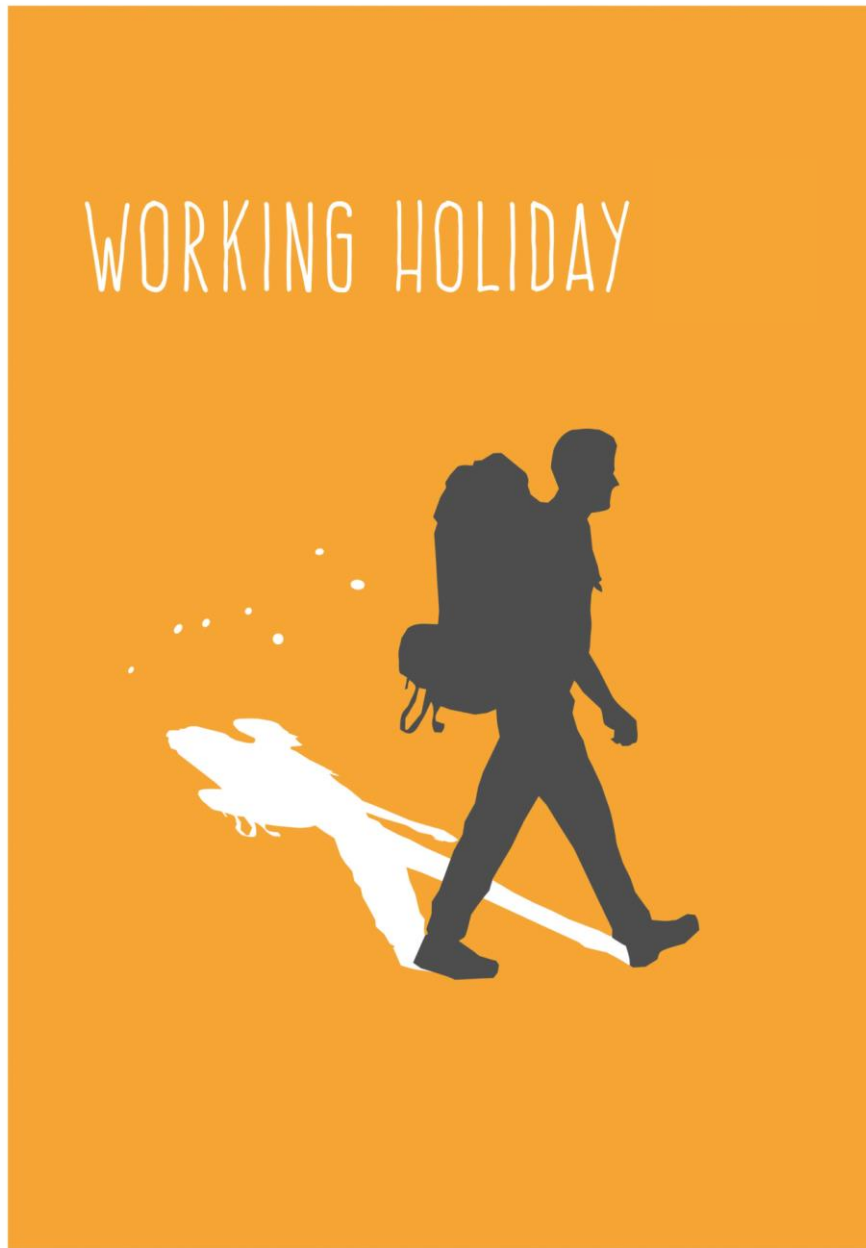
 [IMS Academy Cebu](#)



IMS

What is IMS Working Holiday Program?

This is a program for students preparing for an overseas working holiday. It covers English conversation required in the local area, job preparation, and work English for each job/position, including English expressions in various situations, English interviews, and writing resumes and emails.



[IMS Working Holiday Program]

* Outline

- 4-week program
- IMS Level 4 or higher can participate
- 4 hours of 1:1 class / 4 hours of group class
- ESL+Working Holiday Program composition is recommended

* Features

- Learn vocabulary and expressions actually used in English-speaking countries
- Resume and interview practice to prepare for employment abroad
- Simulation of conversations and expressions that can be used for each occupation/situation through role-playing classes



Introduction to the Program

Class Type	Number of Classes	Subject	Textbooks
Morning	1	<ul style="list-style-type: none"> CNN, BBC, Ted Talk 	
1:1	4	<ul style="list-style-type: none"> Working Holiday Speaking Working Holiday Vocabulary Working Holiday Interview Working Holiday Correspondence 	<ul style="list-style-type: none"> Business Result IMS Textbook IMS Textbook Business English For Emails
Group	4	<ul style="list-style-type: none"> Role Playing Working Holiday Idioms Supplemental Grammar Fundamental Pronunciation 	<ul style="list-style-type: none"> IMS Textbook IMS Textbook IMS Textbook IMS Textbook
Night	2	<ul style="list-style-type: none"> Daily English / Intensive Grammar / Vocabulary / Conversation 	

* Morning, Night class are optional

Working Holiday Program 1:1 Class Information

Working Holiday Speaking	Develop effective communication skills at work
Working Holiday Vocabulary	Learn terminology used in various professional fields
Working Holiday Interview	Increased employability by improving interview skills and confidence
Working Holiday Correspondence	Improve the ability to write diverse emails and comprehensive resumes



Working Holiday Program Group Class Information

Role Playing	Improves speaking speed and provides speaking opportunities on various topics
Working Holiday Idioms	Learn expressions related to occupation, work style, and relationships
Supplemental Grammar	Improving language skills with a focus on grammar rules
Fundamental Pronunciation	Practice pronunciation of specific sounds, correct intonation, and speech patterns



IMS Working Holiday Program Progress Test

Week 2

- Paper-based test (grammar and vocabulary)
- Role-playing (speaking) - Proctor Assessment

Week 4

- Paper-based test (grammar and vocabulary)
- Job Interview (Speaking) - Proctor Assessment



Working Holiday Program TIME TABLE

Time		Working Holiday Program
6:30 – 8:30		Breakfast
7:00 – 7:45		Morning Class (Mon-Fri) CNN, BBC, Ted Talk
7:45 – 8:30		Daily Test (Mon-Thur)
1 st	8:30 – 9:15	One to One Working Holiday Speaking
2 nd	9:25 – 10:10	One to One Working Holiday Vocabulary
3 rd	10:20 – 11:05	One to One Working Holiday Interview
4 th	11:15 – 12:00	One to One Working Holiday Correspondence
12:00 – 13:00		Lunch
5 th	13:00 – 13:45	Group Class Role Playing
6 th	13:55 – 14:40	Group Class Working Holiday Idioms
7 th	14:50 – 15:35	Self-study
8 th	15:45 – 16:30	Group Class Supplemental Grammar
9 th	16:40 – 17:25	Group Class Fundamental Pronunciation
17:25 – 19:00		Dinner
Night	18:30 – 20:20	Evening Class Daily English / Intensive Grammar / Vocabulary

*** This timetable is a sample, and it changes depending on your personal schedule.**

THANK YOU



IMS

